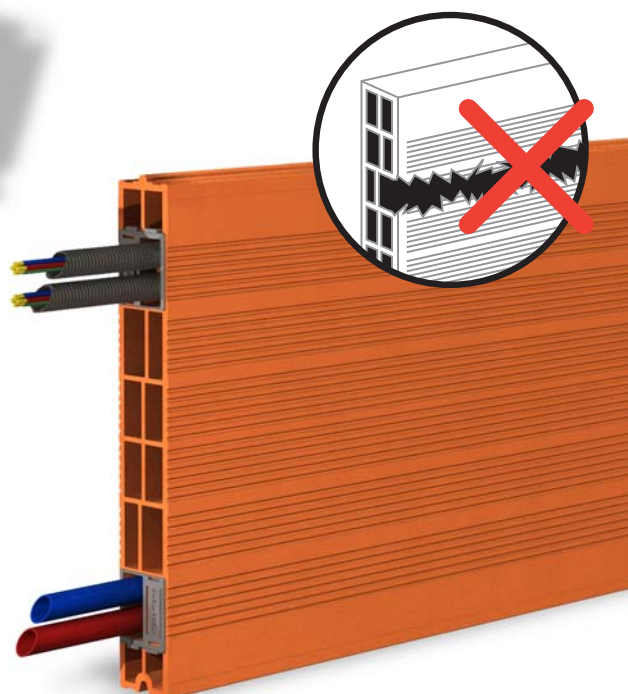


HispaPlano 100% Installations **PASATUBOS**

The device that prevents from breaking horizontal channels



silensis
Paredes de Ladrillo



November 2008

THE PRODUCT

Cerámica Acústica, together with the I+D department of Trenza Metal has developed the **PASATUBOS HispaPlano** (guiding tubes device) that, combined with the new Large Size **HispaPlano 100% Instalaciones** brick, avoids breaking horizontal channels in the brick wall.

Thanks to the new design of HispaPlano 100% Instalaciones, with **4 wider cells** and our **Pasatubos HispaPlano**, electric wiring and plumbing pipes can be installed **without damaging the brick wall**.

ADVANTAGES

- Easy to handle and to install.
- Avoids breaking horizontal channels in the brick wall.
- Avoids weakening the wall by breaking the junctions between bricks to remove mortar from the cells.
- Prevents the risk of cracks or longitudinal stains in the damp plaster applied.
- Speeds up the assembly of the wall and the execution of installations.
- Cleaner job by reducing debris.
- Saves time and costs.

ASSEMBLY

1. Previously we must know the height of the different installations (switches, lights, air conditioning,...), being their more usual locations those on Fig. 4:
 - Sockets: placed 40 cm over the floor (1st row of bricks)
 - Light switches: placed at 90 cm (2nd row of bricks)
 - Lighting and air conditioning: at 240 cm (5th row of bricks).
2. Only in the indicated rows and before placing each brick in its definitive position, the PASATUBOS piece is placed on the side of the brick, one per junction, being firmly secured thanks to the special design of its flaps. (see fig. 1 and 2).

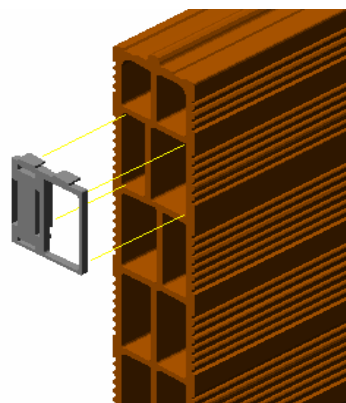


fig. 1

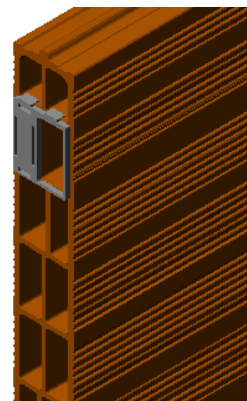


fig. 2

3. To assembly the bricks, Hispalam mortar is spread all over the cells side of the brick, preventing it from entering in the open cell where the **PASATUBOS** is placed (see fig. 3)

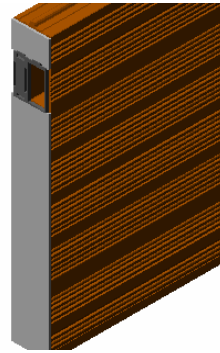


fig. 3

4. Finally, the brick is placed in its definitive wall position, and the row is completed by placing the following bricks with the PASATUBOS always in the same cell.

This way we create a **free horizontal pass** though all the bricks of the **row at the same height**.

This way, through the boxes of wires and pipes, tubes can be introduced through the cells in which the **PASATUBOS** were placed.

Once the wall is finished, the **Pasatubos Hispaplano 100 %** is visible in the junction between bricks, useful as an **indicator sign for the worker**, and as proof of a correct execution for the work management.

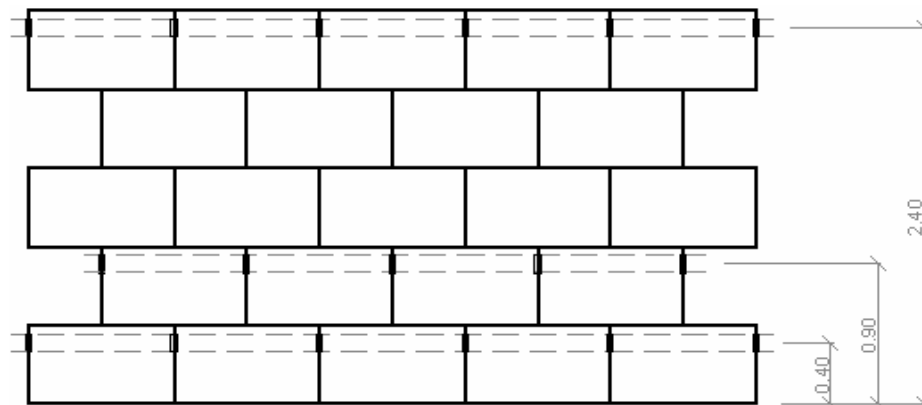


fig. 4

The combination of the large size brick **Hispaplano 100% Instalaciones** and the **Pasatubos HispaPlano** device, provide the wall with **integrity, higher resistance and the required quality to conform with the new spanish CTE regulations**.

